

32841 MIDDLEBELT ROAD
SUITE #405
FARMINGTON HILLS, MICHIGAN

OFFICE FOR LEASE
1,114 Square Feet Available



**SIGNATURE
ASSOCIATES**
KNOW SIGNATURE | KNOW RESULTS

WOODBURY OFFICE PARK



PROPERTY FEATURES

- 1,114 square foot suite available
- Move-in ready office suite
- Owner occupied medical/office building
- Close to area expressways and shopping
- Ample surface parking
- Lease Rate: \$16.50/sq.ft. Gross + Utilities



For more information, please contact:

JASON STOUGH
(248) 948 4180
jstough@signatureassociates.com

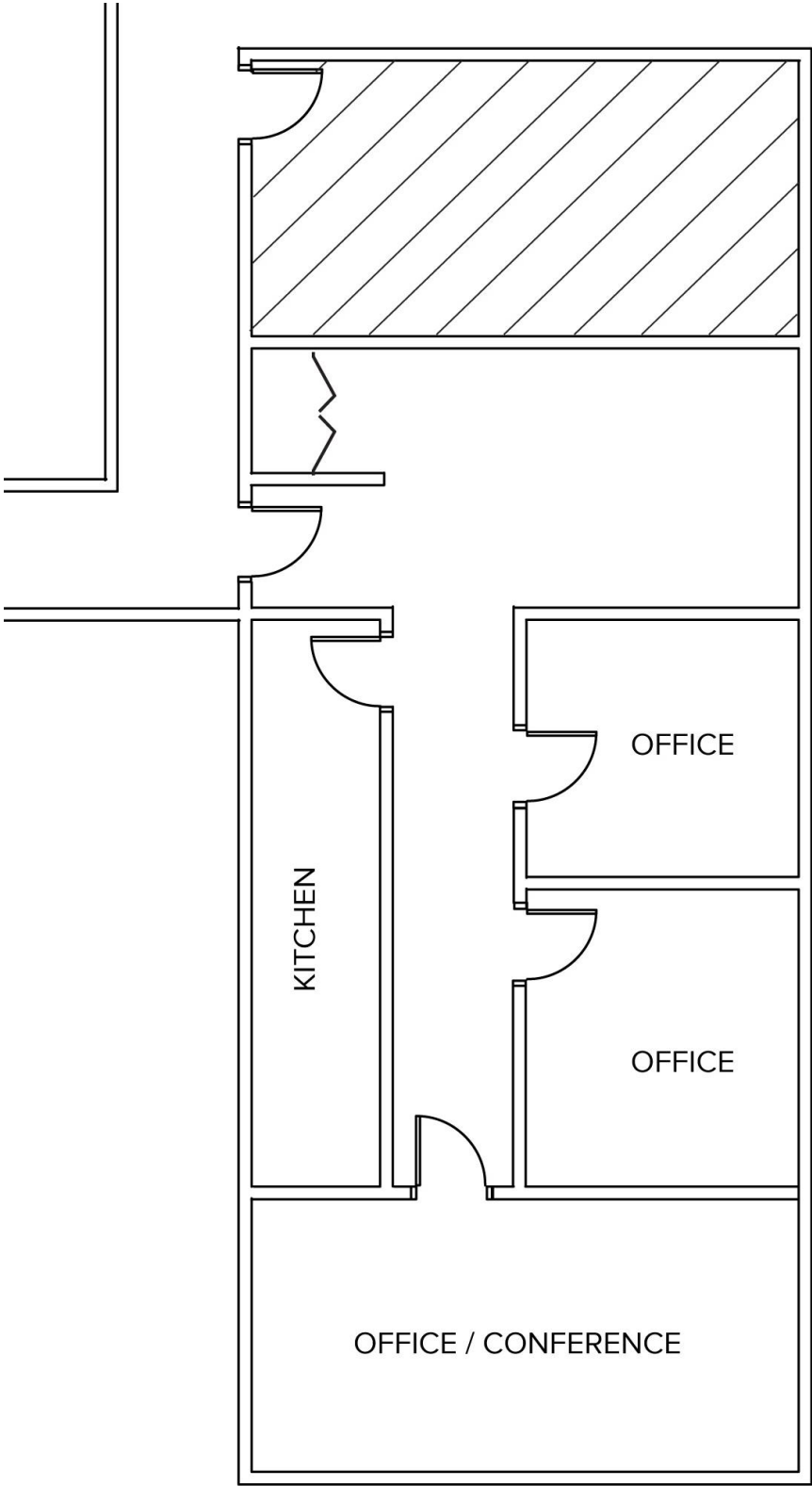
SIGNATURE ASSOCIATES
One Towne Square, Suite 1200
Southfield, MI 48076
www.signatureassociates.com

38241 Middlebelt Rd – Farmington Hills, Michigan

Office For Lease

1,114
Square Feet
AVAILABLE

Suite 405 | 1,114 SF



For more information, please contact:
JASON STOUGH
(248) 948 4180
jstough@signatureassociates.com

SIGNATURE ASSOCIATES
One Towne Square, Suite 1200
Southfield, MI 48076
www.signatureassociates.com

Information is subject to verification and no liability for errors or omissions is assumed. Price is subject to change and listing withdrawal.